

Activity Name	Original Duration	Planned Start	Planned Finish	2011				2012				2013				2014				2015				2016	
				Q3	Q4	Q1	Q2	Q3	Q4	Q1	Q2	Q3	Q4	Q1	Q2	Q3	Q4	Q1	Q2	Q3	Q4	Q1	Q2		
HY/2009/15 - CWB TUNNEL (CBTS SECTION)																									
SUBMISSIONS COMPLYING WITH EPs																									
EM&A Manual (rely on the Master EP's submission EP-364/2009/A Condition 2.9)																									
Baseline Monitoring Report (rely on the Master EP's submission EP-364/2009 Condition 3.3)																									
Monthly EM&A (rely on the masters EP's Submission, EP-364/2009/A Condition 3.4)																									
A dedicated website (rely on the master EP's submission, EP-364/2009/A Condition 4.2)																									
Management organization of main construction companies (FEP Condition 2.6)	1d	02-Oct-10	02-Oct-10																						
Work Schedule (FEP Condition 2.7)	1d	27-Oct-10	27-Oct-10																						
Location Plan (FEP Condition 2.8)	1d	27-Oct-10	27-Oct-10																						
Noise Management plan (FEP Condition 2.9)	1d	27-Oct-10	27-Oct-10																						
Landscape plan (FEP condition 2.10)	1d	31-Jan-11	31-Jan-11																						
EAST VENTILATION ADIT																									
CCT @ Portion 1, 2, 4, 6, 22	1315d	27-Sep-10	03-May-14																						
EV Adit @ Portion 4-Advance Works	526d	27-Sep-10	05-Mar-12																						
EV Adit Portion 1, 2, 6, 22	26d	22-Dec-11	16-Jan-12																						
EV Adit-based on Conforming Design	323d	15-Feb-12	02-Jan-13																						
TCBR1E (TS1 Area)																									
Diaphragm Wall Construction (incl. SI, & tests after completion)	107d	26-Apr-11	10-Aug-11																						
Excavation & Lateral Support, ELS	99d	16-Jul-11	22-Oct-11																						
Cut & Cover Tunnel Construction (incl. backfill)	78d	22-Oct-11	07-Jan-12																						
OHVD and Cable Trough (access from Portion 22)	76d	18-Dec-13	03-Mar-14																						
TCBR2 + TCBR3 (TS2 Area)																									
Diaphragm Wall Construction	118d	06-Jul-12	31-Oct-12																						
Excavation & Lateral Support, ELS	248d	06-Jul-12	10-Mar-13																						
Cut & Cover Tunnel Construction	164d	11-Mar-13	21-Aug-13																						
OHVD Cable Trough (Access from Portion 22)	150d	05-Aug-13	01-Jan-14																						
TCBR1W (TS4 Area)																									
Diaphragm Wall Construction	148d	28-Jun-11	22-Nov-11																						
Excavation & Lateral Support, ELS	319d	26-Jun-11	11-May-12																						
Landing Steps - Demolition/Reconstruct as footpath	40d	28-Jun-11	23-Aug-11																						

- ◆ Milestone
- ◆ Milestone
- ▨ Remaining Work
- ▨ Critical Remaining Work
- ▨ Actual Work

1 of 2

China State Construction Engineering (Hong Kong) Ltd.

Contract No. HY/2009/15 - Central Wan Chai By Pass - Tunnel

(CBTS Section)

Prepared by William Caluza			
Date	Revision	Checked	Approved
14-Mar-11	Revision C	ST	KL
	File: GC01a		
	(Layout:HY/2009/15: CWB - Summary)		

中國建築工程(香港)有限公司

CHINA STATE CONSTRUCTION ENGINEERING (HONG KONG) LTD

Activity Name	Original Duration	Planned Start	Planned Finish	2011					2012				2013				2014				2015				2016		
				Q3	Q4	Q1	Q2	Q3	Q4	Q1	Q2	Q3	Q4	Q1	Q2	Q3	Q4	Q1	Q2	Q3	Q4	Q1	Q2	Q3	Q4	Q1	
Rock Excavation	235d	25-Apr-12	15-Dec-12																								
ME4-Diaphragm Wall	114d	10-May-12	19-Oct-12																								
AS Logistics Area for Mined Tunneling Works	174d	01-Jun-12	07-Feb-13																								
ME4-ELS Works	212d	01-Jun-12	02-Apr-13																								
SCL Entrusted Works	291d	18-Jul-12	08-Sep-13																								
Cut & Cover Tunnel Construction (w/o TS4 +)	111d	17-Dec-12	06-Apr-13																								
ME4-RC Structure	146d	28-Jan-13	21-Aug-13																								
OHVD and Cable Trough (Access from TZ5/TPCWAE/TPCWAW)	180d	17-Jun-13	13-Dec-13																								
MINED TUNNEL																											
CHT Protection Works @ location A, B, C	342d	27-Sep-10	01-Feb-12																								
Tunnel works from West Portal (access from TPCWAE& TZ5)	418d	12-Mar-12	30-Oct-13																								
Tunnel Works from East Portal (Access from TS4 Area)	214d	30-Mar-12	01-Feb-13																								
Tunnel OHVD & Cable Trough	384d	02-Dec-13	22-May-15																								
TPCWAE																											
Drainage Diversion works along Hung Hing Road (Portion 19)	176d	15-Oct-10	24-Jun-11																								
Diaphragm Wall Construction	147d	20-May-11	13-Oct-11																								
Excavation & Lateral Support, ELS	421d	20-May-11	13-Jul-12																								
Rock Excavation	208d	12-Mar-12	03-Oct-12																								
AS Logistics Area for Mined Tunneling works	342d	12-May-12	18-Apr-13																								
Cut & Cover Tunnel Construction	130d	28-Jan-13	06-Jun-13																								
OHVD and Cable Trough (Access from TZ5/TPCWAW)	182d	18-Feb-15	18-Aug-15																								
TPCWAW & PORTION 11																											
Diaphragm Wall Construction + Portion 11	222d	25-Oct-13	03-Jun-14																								
Excavation & Lateral Support, ELS	478d	25-Oct-13	14-Feb-15																								
Cut & Cover Tunnel Construction	143d	30-Dec-14	21-May-15																								
OHVD and Cable Trough Installation (Access from Portion 11)	235d	22-May-15	11-Jan-16																								

- ◆ Milestone
- ◆ Milestone
- ▨ Remaining Work
- ▨ Critical Remaining Work
- ▨ Actual Work

2 of 2

China State Construction Engineering (Hong Kong) Ltd.
Contract No. HY/2009/15 - Central Wan Chai By Pass - Tunnel
(CBTS Section)

Prepared by William Caluza			
Date	Revision	Checked	Approved
14-Mar-11	Revision C	ST	KL
	File: 0001a		
	(Layout: HY/2009/15: CWB - Summary)		



Contract No. HK/2009/01

Wan Chai Development Phase II - Central Wan Chai Bypass - Central - Wan Chai Bypass at HKCEC

Worklow Programme for Diaphragm Wall Construction Works

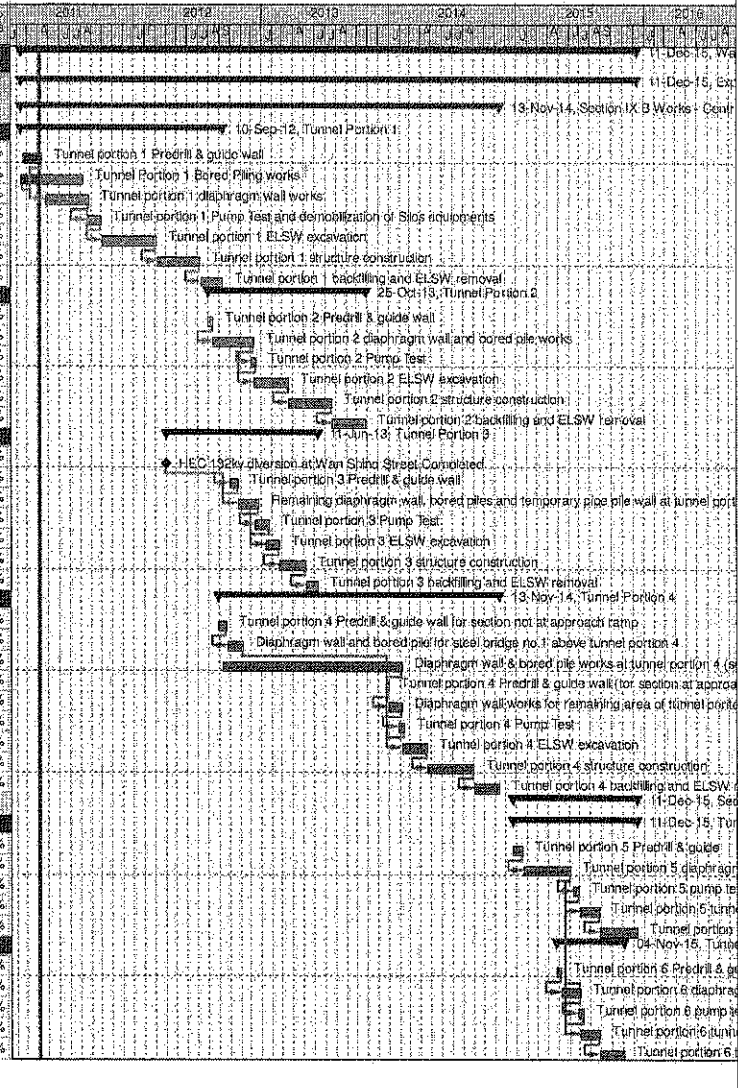
Activity Description	Start	Finish	2011												2012												2013												2014												2015											
			1	2	3	4	5	6	7	8	9	10	11	12	1	2	3	4	5	6	7	8	9	10	11	12	1	2	3	4	5	6	7	8	9	10	11	12	1	2	3	4	5	6	7	8	9	10	11	12												
Management organisation of Main Construction Companies	18/5/11	18/5/11																																																												
Work schedule and location plans	12/7/11	12/7/11																																																												
Noise Management Plan	9/6/11	9/6/11																																																												
Landscape Plan	10/8/11	10/8/11																																																												
Stage 1																																																														
Diaphragm Wall Construction	25/8/11	31/1/12																																																												
Excavation Works	12/12/11	3/2/12																																																												
CWB + SCL Structural Works	19/12/11	29/2/12																																																												
Stage 2																																																														
Diaphragm Wall Construction	7/5/12	1/11/12																																																												
Excavation Works	23/11/12	2/7/13																																																												
CWB + SCL Structural Works	12/1/13	24/3/14																																																												
Stage 3																																																														
Diaphragm Wall Construction	16/5/14	9/7/14																																																												
Excavation Works	23/7/14	9/10/14																																																												
CWB + SCL Structural Works	30/7/14	12/12/14																																																												
Misc. Works																																																														
CWB Associated Facilities and Backfilling to Formation	29/10/14	17/4/15																																																												

Last Updated on: 6-Aug-2011

Wan Chai Development Phase II - Central - Wan Chai
Bypass at Wan Chai East CONTRACT HK/2009/02

CHUN WO - CRGL JV

Activity ID	Activity Name	OD	Start	Finish	% Planned	2011	2012	2013	2014	2015	2016
Wan Chai Development Phase II - Central - Wan Chai Bypass at Wan Chai East											
Expanded and More Detailed Initial Works Programme											
Section IX B Works - Central - Wan Chai Bypass Tunnel Structure from chainage 3400 to eastern tunnel											
Tunnel Portion 1											
S9B-T1-0005	Tunnel portion 1 Predrill & guide wall	10	18-Feb-11	13-Apr-11	40%						
S9B-T1-0007	Tunnel Portion 1 Bored Piling works	105	09-Feb-11	08-Aug-11	0%						
S9B-T1-0010	Tunnel portion 1 diaphragm wall works	105	26-Apr-11	27-Aug-11	0%						
S9B-T1-0015	Tunnel portion 1 Pump Test and demobilization of Slos equipments	35	20-Aug-11	30-Sep-11	0%						
S9B-T1-0020	Tunnel portion 1 ELSW excavation	130	03-Oct-11	07-Mar-12	0%						
S9B-T1-0030	Tunnel portion 1 structure construction	100	09-Mar-12	09-Jul-12	0%						
S9B-T1-0040	Tunnel portion 1 backfilling and ELSW removal	54	10-Jul-12	10-Sep-12	0%						
Tunnel Portion 2											
S9B-T2-0105	Tunnel portion 2 Predrill & guide wall	10	02-Aug-12	13-Aug-12	0%						
S9B-T2-0010	Tunnel portion 2 diaphragm wall and bored pile works	100	14-Aug-12	10-Dec-12	0%						
S9B-T2-0015	Tunnel portion 2 Pump Test	14	03-Dec-12	18-Dec-12	0%						
S9B-T2-0020	Tunnel portion 2 ELSW excavation	80	11-Dec-12	19-Mar-13	0%						
S9B-T2-0030	Tunnel portion 2 structure construction	100	20-Mar-13	22-Jul-13	0%						
S9B-T2-0040	Tunnel portion 2 backfilling and ELSW removal	80	23-Jul-13	25-Oct-13	0%						
Tunnel Portion 3											
S9B-T3-0005	HEC 132kv diversion at Wan Shing Street Completed	0	01-Apr-12*		0%						
S9B-T3-0008	Tunnel portion 3 Predrill & guide wall	20	02-Oct-12	25-Oct-12	0%						
S9B-T3-0010	Remaining diaphragm wall, bored piles and temporary pipe pile wall at tunnel portion 3	50	25-Oct-12	22-Dec-12	0%						
S9B-T3-0015	Tunnel portion 3 Pump Test	30	15-Dec-12	22-Jan-13	0%						
S9B-T3-0020	Tunnel portion 3 ELSW excavation	30	15-Jan-13	20-Feb-13	0%						
S9B-T3-0030	Tunnel portion 3 structure construction	80	21-Feb-13	06-May-13	0%						
S9B-T3-0040	Tunnel portion 3 backfilling and ELSW removal	30	07-May-13	11-Jun-13	0%						
Tunnel Portion 4											
S9B-T4-0005	Tunnel portion 4 Predrill & guide wall for section not at approach ramp	21	30-Aug-12	22-Sep-12	0%						
S9B-T4-0010	Diaphragm wall and bored pile for steel bridge no.1 above tunnel portion 4	40	24-Sep-12	10-Nov-12	0%						
S9B-T4-0020	Diaphragm wall & bored pile works at tunnel portion 4 (section not at approach ramp)	420	11-Sep-12	05-Feb-14	0%						
S9B-T4-0025	Tunnel portion 4 Predrill & guide wall (for section at approach ramp)	5	23-Dec-13	30-Dec-13	0%						
S9B-T4-0030	Diaphragm wall works for remaining area of tunnel portion 4 (for section at approach ramp)	30	31-Dec-13	06-Feb-14	0%						
S9B-T4-0035	Tunnel portion 4 Pump Test	14	28-Jan-14	14-Feb-14	0%						
S9B-T4-0040	Tunnel portion 4 ELSW excavation	60	07-Feb-14	19-Apr-14	0%						
S9B-T4-0050	Tunnel portion 4 structure construction	110	22-Apr-14	01-Sep-14	0%						
S9B-T4-0060	Tunnel portion 4 backfilling and ELSW removal	60	02-Sep-14	13-Nov-14	0%						
Section X Works - Central - Wan Chai Bypass Tunnel Structure from western tunnel to chainage 3400											
Tunnel Portion 5											
S10-T5-0005	Tunnel portion 5 Predrill & guide	21	23-Dec-14	19-Jan-15	0%						
S10-T5-0010	Tunnel portion 5 diaphragm wall & bored pile works	110	20-Jan-15	04-Jun-15	0%						
S10-T5-0015	Tunnel portion 5 pump test	14	13-Jun-15	30-Jun-15	0%						
S10-T5-0020	Tunnel portion 5 tunnel ELSW excavation	45	04-Jul-15	25-Aug-15	0%						
S10-T5-0030	Tunnel portion 5 tunnel structure construction	90	26-Aug-15	11-Dec-15	0%						
Tunnel Portion 6											
S10-T6-0040	Tunnel portion 6 Predrill & guide	12	24-Apr-15	08-May-15	0%						
S10-T6-0050	Tunnel portion 6 diaphragm wall & bored pile works at Area 10	45	09-May-15	09-Jul-15	0%						
S10-T6-0055	Tunnel portion 6 pump test	14	25-Jun-15	11-Jul-15	0%						
S10-T6-0060	Tunnel portion 6 tunnel ELSW excavation at Area 10	45	04-Jul-15	25-Aug-15	0%						
S10-T6-0070	Tunnel portion 6 tunnel structure construction at Area 10	58	26-Aug-15	04-Nov-15	0%						



CEDD CONTRACT NO. HK/2009/02
 Wan Chai Development Phase II - Central Wan Chai Bypass at Wan Chai East (Contract 2)
 Revised Programme dated 7 April 2011

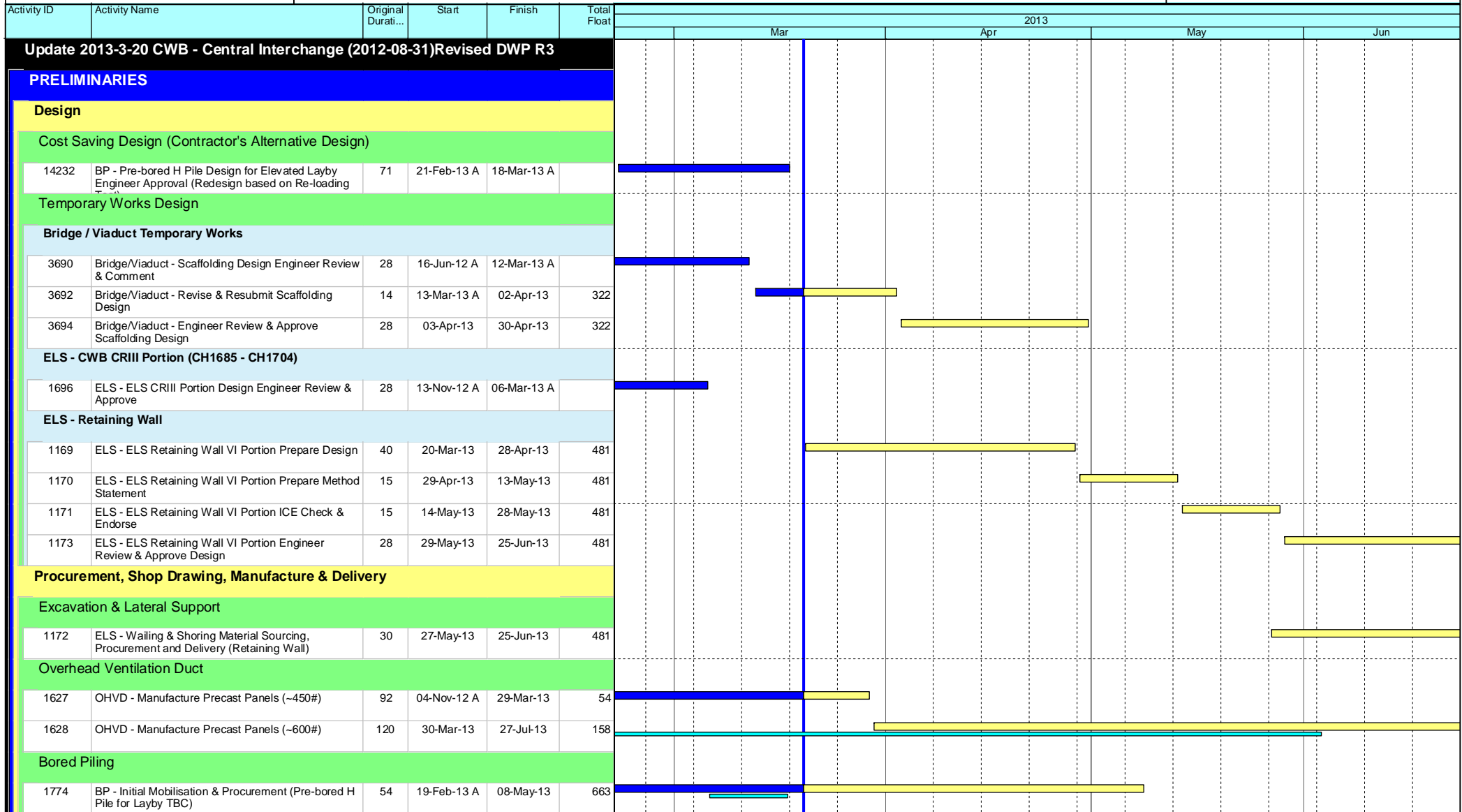
Date	Revision	Checked	Approved
07-Apr-11		KT	KY

Page 10 of 11

Data Date: 20-Mar-13

HY/2009/18 Central - Wan Chai Bypass (Central Interchange)

TASK filters: 3 Months, Not HL.



- Current Milestone
- Critical Remaining Work
- Level of Effort
- Remaining Work
- Baseline Milestone
- Project Baseline
- Actual Work

Leighton Contractors (Asia) Limited Programme Update 30 (Mar 2013) THREE MONTH ROLLING

Project ID: U030
 Baseline: DCP4-4
 Layout: Update Three Month Rolling U029
 Page 1 of 7

Date	Revision	Checked	Approv...
21-Mar-13	U030	EC	RW
21-Feb-13	U029	EC	RW

Data Date: 20-Mar-13

HY/2009/18 Central - Wan Chai Bypass (Central Interchange)



TASK filters: 3 Months, Not HL.

Activity ID	Activity Name	Original Durati...	Start	Finish	Total Float	2013											
						Mar			Apr			May			Jun		
Post-tensioning																	
3835	PT - Initial Mobilisation & Procurement	45	20-Feb-13 A	02-May-13	319												
1137	PT - Prepare & Submit Post-tensioning Method Statement	15	21-Mar-13	04-Apr-13	319												
1141	PT - Post-tensioning Method Statement Engineer Review & Approval	28	05-Apr-13	02-May-13	319												
Bridge Bearings																	
3845	BEAR - Procure & Fabricate Bridge Bearings	30	15-Nov-12 A	08-May-13	324												
1142	BEAR - Prepare & Submit Bearing & Plinth Method Statement	28	20-Mar-13	16-Apr-13	443												
1143	BEAR - Bearing & Plinth Method Statement Engineer Review & Approval	28	17-Apr-13	14-May-13	443												
3846	BEAR - Delivery of Bearings	7	09-May-13	15-May-13	324												
Establishment, Mobilisation & Advanced Works																	
Instrumentation and Monitoring																	
3012	INS - Portion VI Install Instrumentation	54	13-Nov-12 A	19-Mar-13 A													
1402	INS - Portion VI Initial Reading	30	04-Mar-13 A	19-Apr-13	430												
SECTION 3A - ALL TUNNEL WORKS IN PORTION IIIB																	
CWB Tunnel - CH1704 to CH1825																	
CWB Tunnel Internal Works																	
1720	1704-1825 - Prepare CJ (substantial completed)	40	21-Dec-12 A	08-Mar-13 A													
CWB Tunnel - CH1685 to CH1704																	
CWB Tunnel Structure																	
1721	1685-1704 - Excavate to 2nd Layer (East)	8	06-Feb-13 A	22-Mar-13	60												
1719	1685-1704 - Erect 2nd Layer Strut (East)	8	23-Mar-13	05-Apr-13	60												
1722	1685-1704 - Excavate to 3rd Layer (East)	5	06-Apr-13	11-Apr-13	60												
1723	1685-1704 - Erect 3rd Layer Strut (East)	10	12-Apr-13	23-Apr-13	60												
1724	1685-1704 - Excavate to Formation Layer (East)	5	24-Apr-13	29-Apr-13	60												
1726	1685-1704 - Construct CWB Tunnel Base Slab & Waterproofing (Bay 12)	23	30-Apr-13	28-May-13	60												

- Current Milestone
- Critical Remaining Work
- Level of Effort
- Remaining Work
- Baseline Milestone
- Project Baseline
- Actual Work

Leighton Contractors (Asia) Limited Programme Update 30 (Mar 2013) THREE MONTH ROLLING

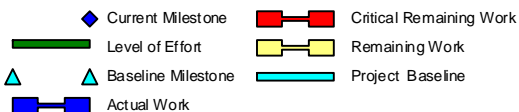
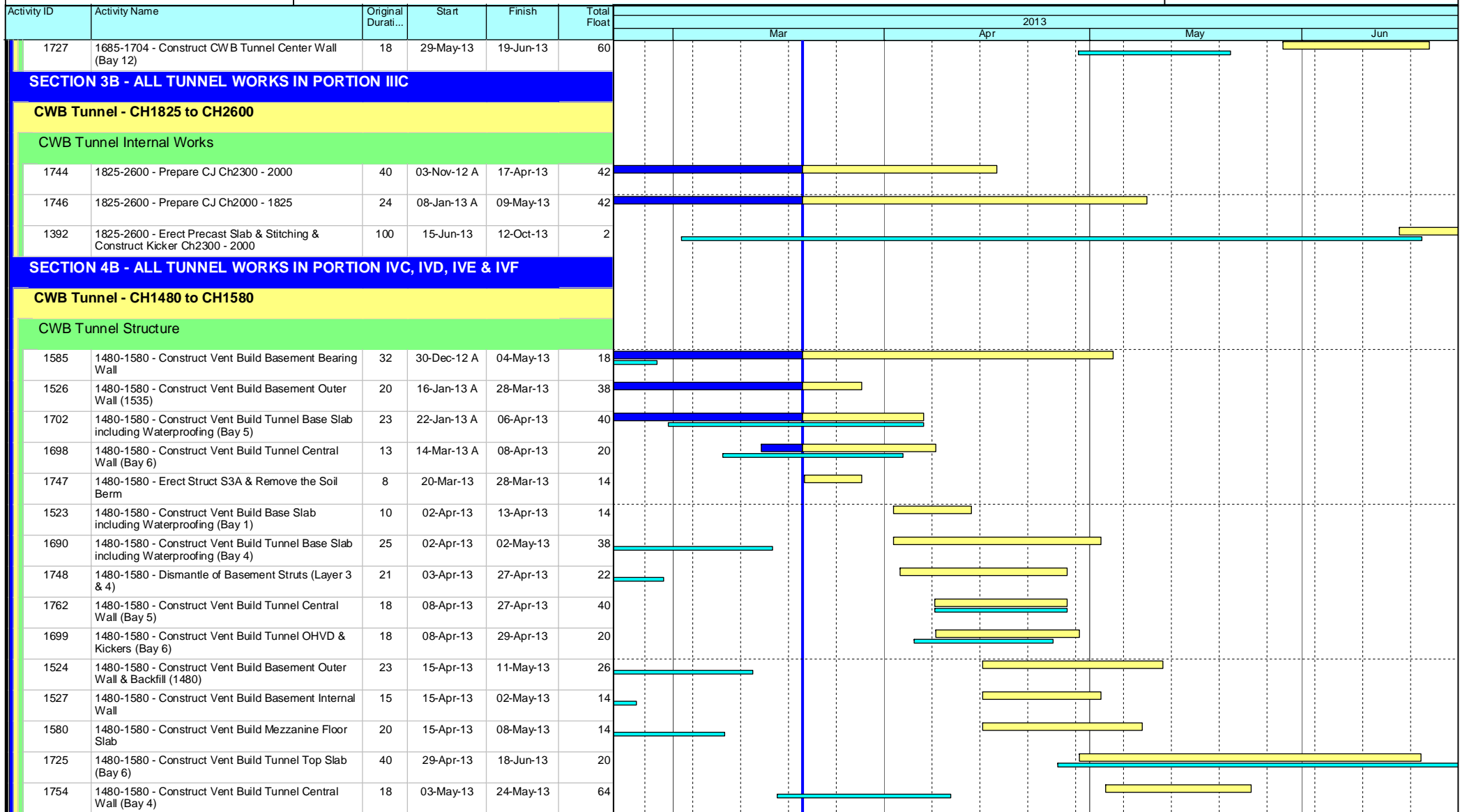
Project ID: U030
 Baseline: DCP4-4
 Layout: Update Three Month Rolling U029
 Page 2 of 7

Date	Revision	Checked	Approv...
21-Mar-13	U030	EC	RW
21-Feb-13	U029	EC	RW

HY/2009/18 Central - Wan Chai Bypass (Central Interchange)



TASK filters: 3 Months, Not HL.



Leighton Contractors (Asia) Limited Programme Update 30 (Mar 2013) THREE MONTH ROLLING

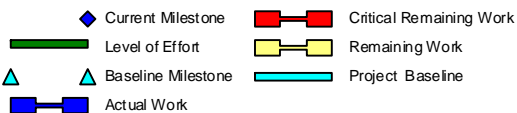
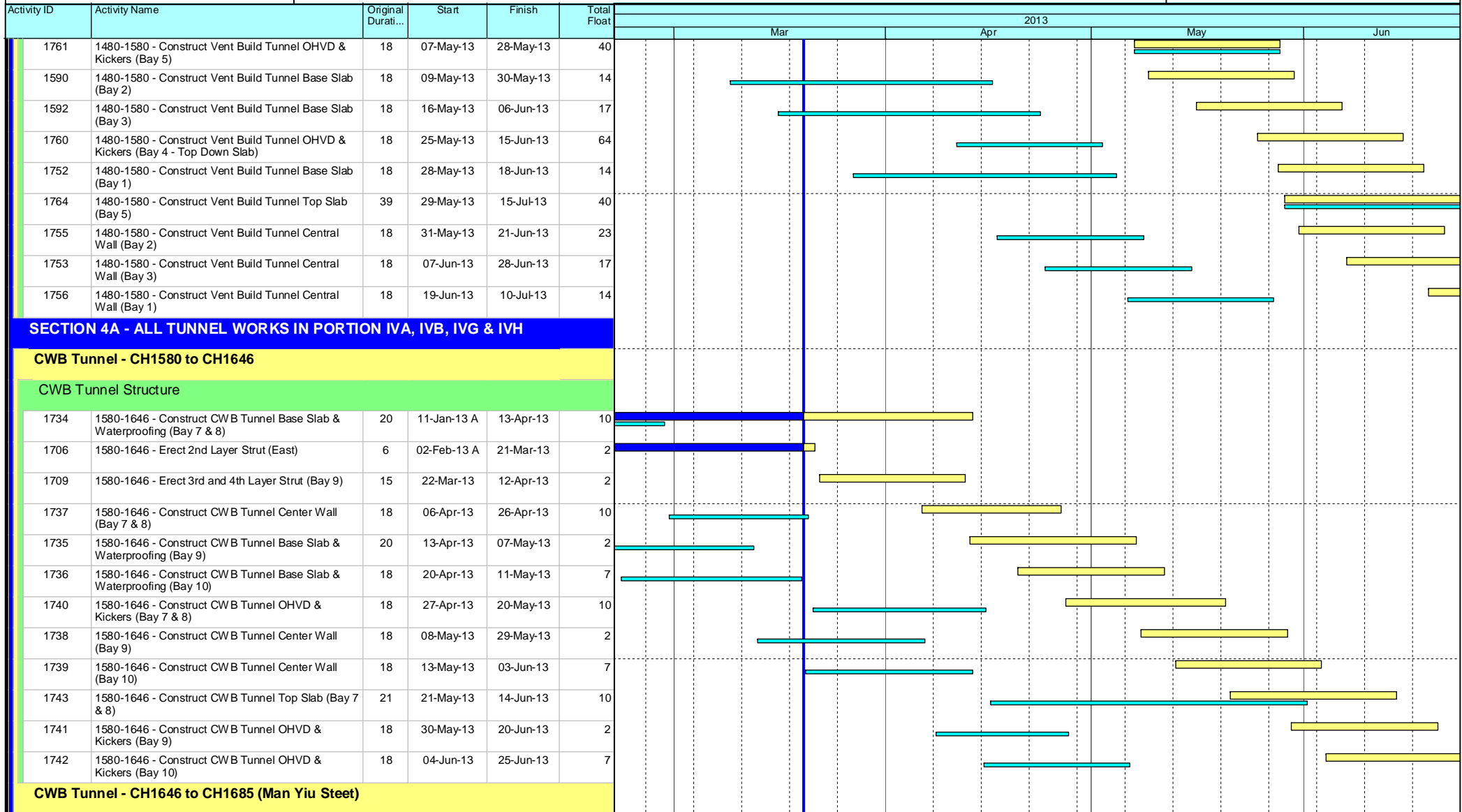
Project ID: U030
Baseline: DCP4-4
Layout: Update Three Month Rolling U029
Page 3 of 7

Date	Revision	Checked	Approv...
21-Mar-13	U030	EC	RW
21-Feb-13	U029	EC	RW

HY/2009/18 Central - Wan Chai Bypass (Central Interchange)



TASK filters: 3 Months, Not HL.



Leighton Contractors (Asia) Limited Programme Update 30 (Mar 2013) THREE MONTH ROLLING

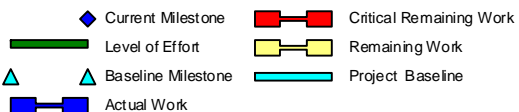
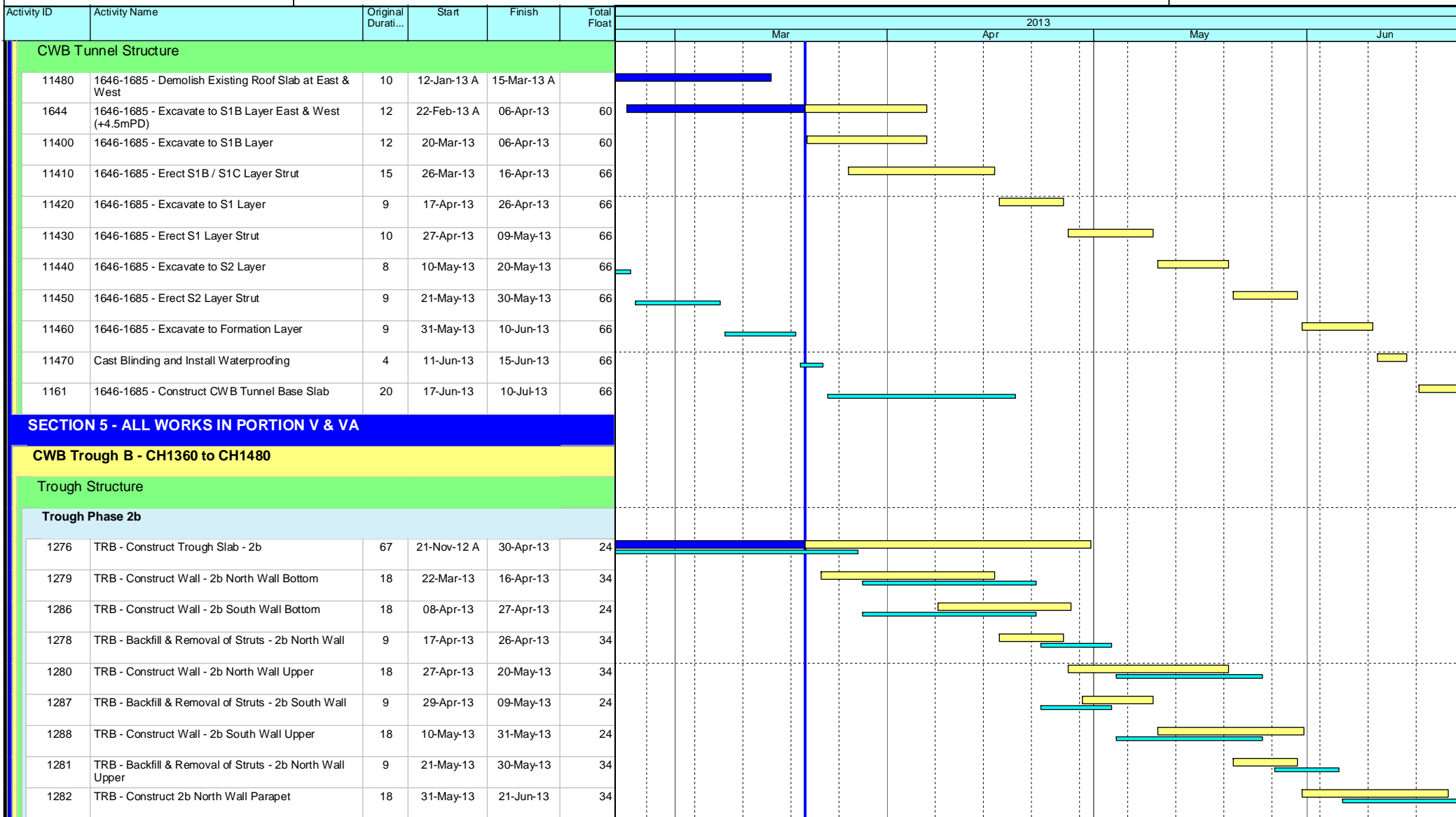
Project ID: U030
 Baseline: DCP4-4
 Layout: Update Three Month Rolling U029
 Page 4 of 7

Date	Revision	Checked	Approv...
21-Mar-13	U030	EC	RW
21-Feb-13	U029	EC	RW

HY/2009/18 Central - Wan Chai Bypass (Central Interchange)



TASK filters: 3 Months, Not HL.



Leighton Contractors (Asia) Limited Programme Update 30 (Mar 2013) THREE MONTH ROLLING

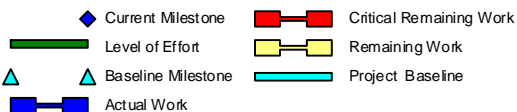
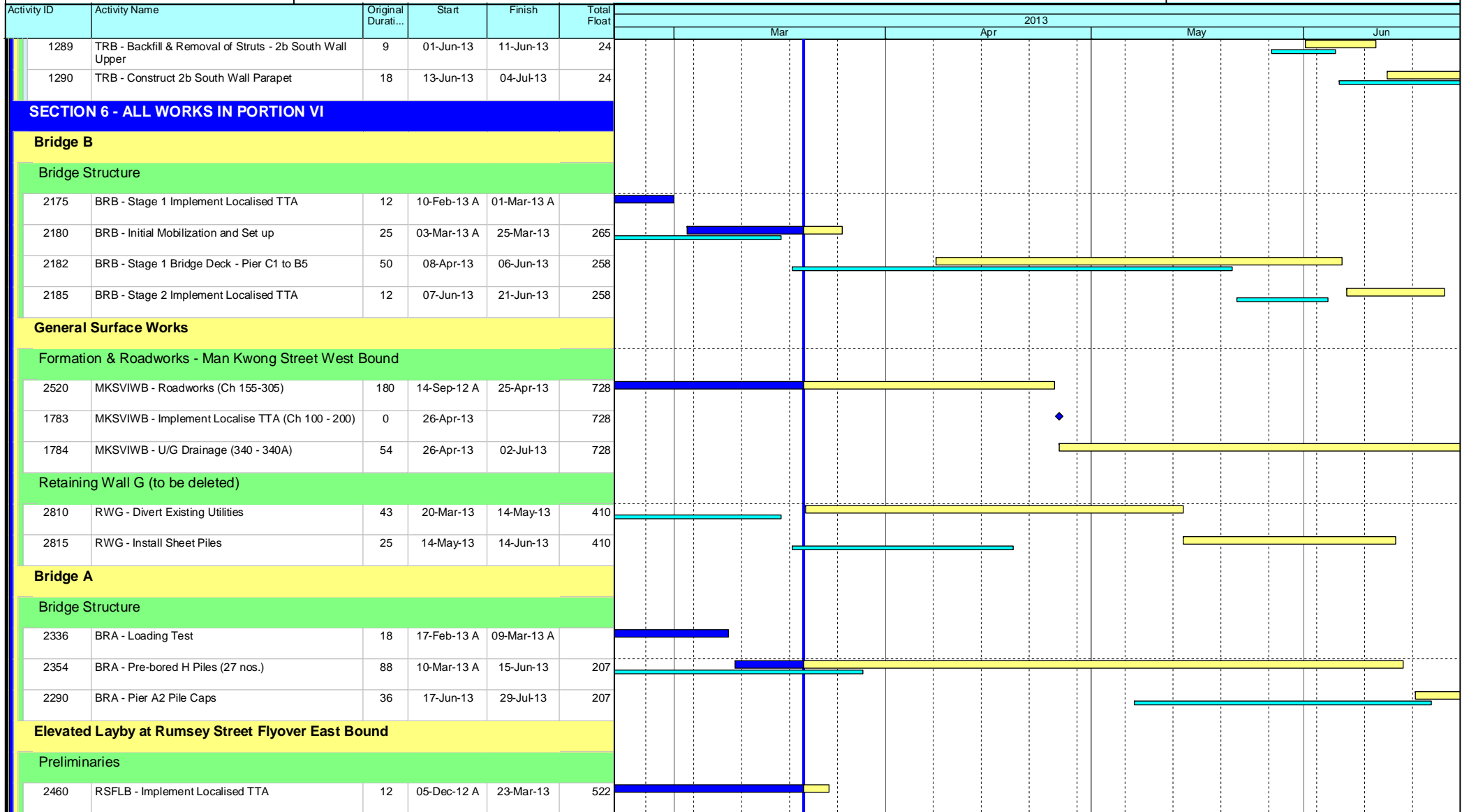
Project ID: U030
 Baseline: DCP4-4
 Layout: Update Three Month Rolling U029
 Page 5 of 7

Date	Revision	Checked	Approv...
21-Mar-13	U030	EC	RW
21-Feb-13	U029	EC	RW

Data Date: 20-Mar-13

HY/2009/18 Central - Wan Chai Bypass (Central Interchange)

TASK filters: 3 Months, Not HL.



Leighton Contractors (Asia) Limited Programme Update 30 (Mar 2013) THREE MONTH ROLLING

Project ID: U030
 Baseline: DCP4-4
 Layout: Update Three Month Rolling U029
 Page 6 of 7

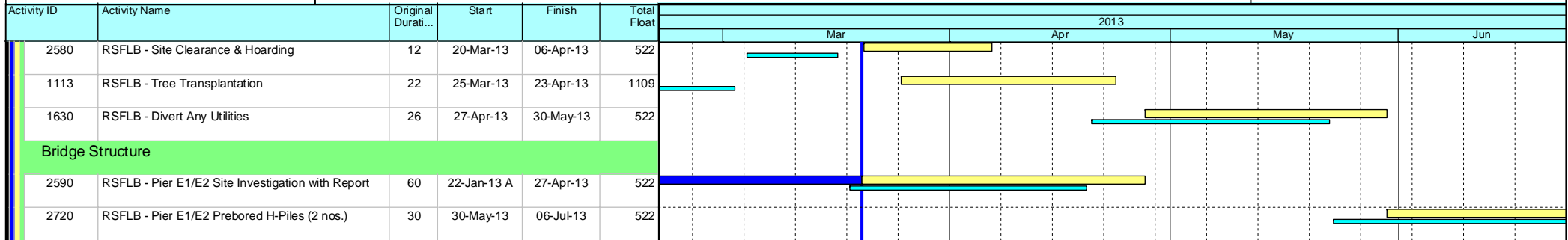
Date	Revision	Checked	Approv...
21-Mar-13	U030	EC	RW
21-Feb-13	U029	EC	RW

Data Date: 20-Mar-13

HY/2009/18 Central - Wan Chai Bypass (Central Interchange)



TASK filters: 3 Months, Not HL.



- Current Milestone
- Level of Effort
- Baseline Milestone
- Actual Work
- Critical Remaining Work
- Remaining Work
- Project Baseline

Leighton Contractors (Asia) Limited Programme Update 30 (Mar 2013) THREE MONTH ROLLING

Project ID: U030
Baseline: DCP4-4
Layout: Update Three Month Rolling U029
Page 7 of 7

Date	Revision	Checked	Approv...
21-Mar-13	U030	EC	RW
21-Feb-13	U029	EC	RW

Activity ID	HY19 Print Sequenc	Activity Name	Rem Dur	Start	Finish	2013																							
						March						April						May						June					
						18	25	04	11	18	25	01	08	15	22	29	06	13	20	27	03	10	17						
3MRP - Mar 2013 to Jun 2013																													
02 - PRE-CONSTRUCTION WORKS																													
02.2 - Contractor's Submission																													
0220-1360	3	Tunnel Structures Materials - Submission	7	19-Jul-12 A	26-Mar-13	Tunnel Structures Materials - Submission																							
0220-1370	3	Tunnel Structures Materials - ER Review/Comment	7	14-Jan-13 A	02-Apr-13	Tunnel Structures Materials - ER Review/Comment																							
0220-1380	3	Tunnel Structures Materials - Resubmission	7	28-Jan-13 A	09-Apr-13	Tunnel Structures Materials - Resubmission																							
0220-1390	3	Tunnel Structures Materials - ER Approval	14	15-Mar-13 A	23-Apr-13	Tunnel Structures Materials - ER Approval																							
0220-1400	3	Tunnel Structures Materials - Procurement & Delivery	60	24-Apr-13	22-Jun-13	Tunnel Structures Materials - Procurement & Delivery																							
0220-1500		Bridge Bearing - Procurement & Delivery (D8/D9/D10)	0	24-Sep-12 A	20-Feb-13 A	Bridge Bearing - Procurement & Delivery (D8/D9/D10)																							
02.3 - Method Statement / Shop Drawings																													
0230-1290	2	MS Cut & Cover Tunnel ELS - ER Approval	0	07-Aug-12 A	28-Feb-13 A	MS Cut & Cover Tunnel ELS - ER Approval																							
0230-1360	3	MS Pre-cast Segment Launching by LG- Resubmission	8	21-Jan-13 A	27-Mar-13	MS Pre-cast Segment Launching by LG- Resubmission																							
0230-1370	3	MS Pre-cast Segment Launching by LG - ER Approval	28	28-Feb-13 A	24-Apr-13	MS Pre-cast Segment Launching by LG - ER Approval																							
0230-1375	31	MS Pre-cast Pier Segment Erection by Crane - Resubmission	0	21-Jan-13 A	27-Feb-13 A	MS Pre-cast Pier Segment Erection by Crane - Resubmission																							
0230-1378	31	MS Pre-cast Pier Segment Erection by Crane - ER Approval	0	28-Feb-13 A	08-Mar-13 A	MS Pre-cast Pier Segment Erection by Crane - ER Approval																							
0230-1490	4	MS Stressing Tendons - ER Approval	12	11-Feb-13 A	31-Mar-13	MS Stressing Tendons - ER Approval																							
0230-1700	6	MS Temporary Bridge TA1 - Submission	24	01-Apr-13	24-Apr-13	MS Temporary Bridge TA1 - Submission																							
0230-1710	6	MS Temporary Bridge TA1 - ER Review & Comment	28	25-Apr-13	22-May-13	MS Temporary Bridge TA1 - ER Review & Comment																							
0230-1720	6	MS Temporary Bridge TA1 - Resubmission	12	23-May-13	03-Jun-13	MS Temporary Bridge TA1 - Resubmission																							
0230-1730	6	MS Temporary Bridge TA - ER Approval	28	04-Jun-13	01-Jul-13	MS Temporary Bridge TA - ER Approval																							
0230-1330	7	MS Pre-casting Beam - ER Approval	0	11-Feb-13 A	19-Mar-13 A	MS Pre-casting Beam - ER Approval																							
0230-1860	8	MS Marine Pier Crosshead Construction - Submission	3	20-Feb-13 A	22-Mar-13	MS Marine Pier Crosshead Construction - Submission																							
0230-1870	8	MS Marine Pier Crosshead Construction - ER Review & Comment	3	04-Mar-13 A	22-Mar-13	MS Marine Pier Crosshead Construction - ER Review & Comment																							
0230-1890	8	MS Marine Pier Crosshead Construction - ER Approval	12	23-Mar-13	03-Apr-13	MS Marine Pier Crosshead Construction - ER Approval																							
0230-1500	8	MS Bridge Demolition - Submission	28	03-Jun-13*	30-Jun-13	MS Bridge Demolition - Submission																							
0230-1900	9	MS Marine Temp Pile Removal - Submission	0	20-Feb-13 A	09-Mar-13 A	MS Marine Temp Pile Removal - Submission																							
0230-1910	9	MS Marine Temp Pile Removal - ER Review & Comment	12	11-Mar-13 A	31-Mar-13	MS Marine Temp Pile Removal - ER Review & Comment																							
0230-1920	9	MS Marine Temp Pile Removal - Resubmission	6	01-Apr-13	06-Apr-13	MS Marine Temp Pile Removal - Resubmission																							
0230-1930	9	MS Marine Temp Pile Removal - ER Approval	12	07-Apr-13	18-Apr-13	MS Marine Temp Pile Removal - ER Approval																							
02.4 - Contractor's Design and Build Items																													
0240-1010	1	Temp Bridge "TA1" Design - Prep & Submit	12	16-Dec-11 A	31-Mar-13	Temp Bridge "TA1" Design - Prep & Submit																							
0240-1020	1	Temp Bridge "TA1" Design - ER review and comment	28	01-Apr-13	28-Apr-13	Temp Bridge "TA1" Design - ER review and comment																							
0240-1030	1	Temp Bridge "TA1" Design - Resubmission	28	29-Apr-13	26-May-13	Temp Bridge "TA1" Design - Resubmission																							
0240-1035	1	Temp Bridge "TA1" Design - ER Approval	21	27-May-13	16-Jun-13	Temp Bridge "TA1" Design - ER Approval																							
0240-1040	1	Temp Bridge "TA" Design - Fabrication	60	08-Jun-13	06-Aug-13	Temp Bridge "TA" Design - Fabrication																							
0240-1041	2	Temp Bridge "TD" Design - Submission	36	01-Mar-13 A	24-Apr-13	Temp Bridge "TD" Design - Submission																							
0240-1042	2	Temp Bridge "TD" Design - ER review and comment	28	25-Apr-13	22-May-13	Temp Bridge "TD" Design - ER review and comment																							
0240-1043	2	Temp Bridge "TD" Design - Resubmission	36	23-May-13	27-Jun-13	Temp Bridge "TD" Design - Resubmission																							
0240-1105	3	Int. Noise Enclosure Structural Design - Submission	42	20-Mar-13	30-Apr-13	Int. Noise Enclosure Structural Design - Submission																							
0240-1110	3	Int. Noise Enclosure Structural Design - ER Review/Resubmission	48	01-May-13	17-Jun-13	Int. Noise Enclosure Structural Design - ER Review/Resubmission																							
0240-1126	4	Noise Barrier Design Structural Design - Submission	42	20-Mar-13	30-Apr-13	Noise Barrier Design Structural Design - Submission																							
0240-1127	4	Noise Barrier Design Structural Design - ER Review/Resubmission	48	01-May-13	17-Jun-13	Noise Barrier Design Structural Design - ER Review/Resubmission																							
0240-1150	5	Perm. Noise Enclosure Structural Design - Submission	42	20-Mar-13	30-Apr-13	Perm. Noise Enclosure Structural Design - Submission																							
0240-1160	5	Perm. Noise Enclosure Structural Design - ER Review/Resubmission	48	01-May-13	17-Jun-13	Perm. Noise Enclosure Structural Design - ER Review/Resubmission																							

- Remaining Level of Effort
- Actual Level of Effort
- Actual Work
- Remaining Work
- Critical Remaining Work
- ◆ Milestone

Contract HY/2009/19

Three Month Rolling Programme (20 FEB 2013 to 19 MAY 2013)

3MRP

3MRP - Mar 2013 to Jun 2013

Page 1 of 7

Activity ID	HY19 Print Sequence	Activity Name	Rem Dur	Start	Finish	2013																	
						March					April				May				June				
						18	25	04	11	18	25	01	08	15	22	29	06	13	20	27	03	10	17
0240-1270	6	Landscaping Design - Submission	90	01-Jun-13*	29-Aug-13																		
0240-1376	7	Cut & Cover Tunnel ELS Design - ER Review & Resubmission	0	14-Jun-12 A	19-Mar-13 A	Cut & Cover Tunnel ELS Design - ER Review & Resubmission																	
0240-1377	7	Cut & Cover Tunnel ELS Design - ER Approval	15	27-Feb-13 A	03-Apr-13	Cut & Cover Tunnel ELS Design - ER Approval																	
0240-1050	8	Temp Bridge "TB" & "TC" Design - Prep & Submit	120	01-May-13*	28-Aug-13																		
0240-1389	9	Segment Temp Stabilization System - Resubmission	0	20-Feb-13 A	19-Mar-13 A	Segment Temp Stabilization System - Resubmission																	
0240-1399	9	Segment Temp Stabilization System - ER Approval	12	04-Mar-13 A	31-Mar-13	Segment Temp Stabilization System - ER Approval																	
0240-1409	91	Segment Temp Pre-stress System - Resubmission	0	20-Feb-13 A	19-Mar-13 A	Segment Temp Pre-stress System - Resubmission																	
0240-1419	91	Segment Temp Pre-stress System - ER Approval	12	10-Mar-13 A	31-Mar-13	Segment Temp Pre-stress System - ER Approval																	
02.5 - Bridge Segment/Beam Off-site Precasting																							
0250-1700.01	BM	Bridge Precast Beam Casting Bridge Beam F5-1	2	14-Jan-13 A	21-Mar-13	Bridge Precast Beam Casting Bridge Beam F5-1																	
0250-1700.02	BM	Bridge Precast Beam Casting Bridge Beam F5-2	15	22-Mar-13	05-Apr-13	Bridge Precast Beam Casting Bridge Beam F5-2																	
0250-1700.03	BM	Bridge Precast Beam Casting Bridge F4 Beam 1-1	15	06-Apr-13	20-Apr-13	Bridge Precast Beam Casting Bridge F4 Beam 1-1																	
0250-1700.04	BM	Bridge Precast Beam Casting Bridge F4 Beam 1-2	14	21-Apr-13	04-May-13	Bridge Precast Beam Casting Bridge F4 Beam 1-2																	
0250-1700.005	BM	Bridge Precast Beam Casting Bridge F4 Beam 2-1	14	05-May-13	18-May-13	Bridge Precast Beam Casting Bridge F4																	
0250-1700.06	BM	Bridge Precast Beam Casting Bridge F4 Beam 2-2	14	19-May-13	01-Jun-13	Bridge Precast Beam																	
0250-1700.07	BM	Bridge Precast Beam Casting Bridge F4 Beam 3-1	14	02-Jun-13	15-Jun-13	Bri																	
0250-1600.07	S1	Bridge D3 Pier D10 Precasting Segment (4-17) - Mould S1	0	15-Feb-13 A	18-Mar-13 A	Bridge D3 Pier D10 Precasting Segment (4-17) - Mould S1																	
0250-1600.09	S1	Bridge D3 Pier D11 Precasting Segment (4-17) - Mould S2	4	17-Jan-13 A	23-Mar-13	Bridge D3 Pier D11 Precasting Segment (4-17) - Mould S2																	
0250-1600.10	S1	Bridge F1 Pier F1A Precasting Segment (1-13) - Mould S1	28	17-Apr-13	14-May-13	Bridge F1 Pier F1A Precasting Segment (1-13)																	
0250-1600.11	S1	Bridge F2 Pier F05 Precasting Segment (1-13) - Mould S1	28	15-May-13	11-Jun-13	Bridge F																	
0250-1650.01	S2	Bridge D3 Pier D08 Precasting Segment (1-8) - Mould S2	0	04-Jan-13 A	22-Feb-13 A	Bridge D3 Pier D08 Precasting Segment (1-8) - Mould S2																	
0250-1650.06	S2	Bridge F1 Pier F2A Precasting Segment (1-11) - Mould S1	28	18-Mar-13 A	16-Apr-13	Bridge F1 Pier F2A Precasting Segment (1-11) - Mould S1																	
0250-1650.02	S2	Bridge D3 Pier D12 Precasting Segment (1-4) - Mould S2	16	24-Mar-13	08-Apr-13	Bridge D3 Pier D12 Precasting Segment (1-4) - Mould S2																	
0250-1650.03	S2	Bridge F1 Pier D12 Precasting Segment (1-4) - Mould S2	16	09-Apr-13	24-Apr-13	Bridge F1 Pier D12 Precasting Segment (1-4) - Mould S2																	
0250-1650.04	S2	Bridge F1 Pier F03 Precasting Segment (1-6) - Mould S2	24	25-Apr-13	18-May-13	Bridge F1 Pier F03 Precasting Segment																	
0250-1650.05	S2	Bridge F2 Pier F03 Precasting Segment (1-5) - Mould S2	20	19-May-13	07-Jun-13	Bridge F2 Pie																	
0250-1650.16	S2	Bridge F2 Pier F05 Precasting Segment (1-6) - Mould S2	20	08-Jun-13	27-Jun-13																		
0250-1655.01	S3	Bridge F3 - F05 Segment - Pier Segment +1 (2 nos) - Mould T	7	02-Apr-13*	08-Apr-13	Bridge F3 - F05 Segment - Pier Segment +1 (2 nos) - Mould T																	
0250-1655.02	S3	Bridge F3 - F05 Segment - Remaining (4 nos) - Mould T	12	09-Apr-13*	20-Apr-13	Bridge F3 - F05 Segment - Remaining (4 nos) - Mould T																	
0250-1655.03	S3	Bridge F3 - F06 Segment - Pier Segment + 2 (3 nos) - Mould T	10	21-Apr-13*	30-Apr-13	Bridge F3 - F06 Segment - Pier Segment + 2 (3 nos) - Mould T																	
0250-1655.04	S3	Bridge F3 - F06 Segment - Remaining (10 nos) - Mould T	30	01-May-13*	30-May-13	Bridge F3 - F06 Segmen																	
0250-1655.014	S3	Bridge F3 - F07 Segment - Pier Segment +2 (3 nos) - Mould T	10	31-May-13*	09-Jun-13	Bridge F3 -																	
0250-1655.024	S3	Bridge F3 - F07 Segment - Remaining (10 nos) - Mould T	30	10-Jun-13*	09-Jul-13																		
0250-1805	SS1	Segment Storage - Portal Gantry Assembly + T&C + RPE Cert	0	21-Jan-13 A	19-Mar-13 A	Segment Storage - Portal Gantry Assembly + T&C + RPE Cert																	
0250-1820	SS1	Segment Storage - Portal Gantry Foundation + Rail Stage 2	0	09-Mar-13 A	19-Mar-13 A	Segment Storage - Portal Gantry Foundation + Rail Stage 2																	
0250-1830	SS1	Segment Storage - Portal Gantry Foundation + Rail Stage 3	6	13-Apr-13	19-Apr-13	Segment Storage - Portal Gantry Foundation + Rail Stage 3																	
0250-1810	SS2	Segment Storage - Haul Road	0	02-Mar-13 A	08-Mar-13 A	Segment Storage - Haul Road																	
0250-1840	SS3	Segment Unloading Derrick - Prebored H-pile (16 nos.)	0	17-Jan-13 A	14-Mar-13 A	Segment Unloading Derrick - Prebored H-pile (16 nos.)																	
0250-1850	SS3	Segment Unloading Derrick - Foundation Stage 1	3	15-Mar-13 A	22-Mar-13	Segment Unloading Derrick - Foundation Stage 1																	
0250-1860	SS3	Segment Unloading Derrick - Assembly + T&C + RPE Cert	18	23-Mar-13	16-Apr-13	Segment Unloading Derrick - Assembly + T&C + RPE Cert																	
0250-1870	SS3	Segment Unloading Derrick - Foundation Stage 2	9	10-Apr-13	19-Apr-13	Segment Unloading Derrick - Foundation Stage 2																	
0250-1880	SS3	Commence Segments Delivery to Site	0	20-Apr-13		◆ Commence Segments Delivery to Site																	
03 - PRELIMINARY WORKS																							
03.3 - Interface Works																							

- Remaining Level of Effort
- Actual Level of Effort
- Actual Work
- Remaining Work
- Critical Remaining Work
- ◆ Milestone

Contract HY/2009/19

Three Month Rolling Programme (20 FEB 2013 to 19 MAY 2013)

3MRP
3MRP - Mar 2013 to Jun 2013
Page 2 of 7

Activity ID	HY19 Print Sequence	Activity Name	Rem Dur	Start	Finish	2013																	
						March					April					May					June		
						18	25	04	11	18	25	01	08	15	22	29	06	13	20	27	03	10	17
0330-1100		Works at FEHD Permanent Depot (Stage 1)	36	02-Apr-13*	15-May-13																		
0330-1110		Submit to FEHD/ER Relocation Sequence & Programme	6	02-Apr-13	09-Apr-13																		
0330-1120		Relocate FEHD to Permanent Depot at Portions IA & X	12	16-May-13	29-May-13																		
05 - SECTION 2 & 2A OF THE WORKS																							
05.1 - Cut & Cover Tunnel Ch 4855-4932 (APS Footprint)																							
05.1.1 - D-Wall Construction																							
0511-1054	N	D-wall Panel N49 Construction	0	12-Jan-13 A	11-Mar-13 A																		
0511-1076	S	D-wall Panel S50 Construction	0	23-Jan-13 A	27-Feb-13 A																		
0511-1077	S	D-wall Panel S51 Construction	1	01-Mar-13 A	20-Mar-13																		
0511-1078	S	D-wall Panel S52 Construction	15	22-Mar-13	11-Apr-13																		
05.2 - Cut & Cover Tunnel Ch 4932-5149																							
05.2.1 - D-Wall Construction																							
0521-1990.67	D07A	D-wall South Panel S65 Construction	0	16-Feb-13 A	15-Mar-13 A																		
0521-1990.72	D07B	D-wall South Panel S58 Construction	0	19-Dec-12 A	20-Feb-13 A																		
0521-1990.73	D07B	D-wall South Panel S59 Construction	10	22-Feb-13 A	02-Apr-13																		
0521-1990.74	D07B	D-wall South Panel S60 Construction	24	04-Apr-13	03-May-13																		
0521-2195	DZ14	Set-up 3rd and 4th Rebar Cage Bed at EVB	0	01-Feb-13 A	28-Feb-13 A																		
0521-2205	DZ14	Remove/Clear All Rebar Cage Bed at Tunnel Area	0	14-Feb-13 A	28-Feb-13 A																		
0521-2175	DZ14	Pump Test C&C Tunnel East Part	9	14-Feb-13 A	30-Mar-13																		
05.2.2 - Barrette Construction																							
0522-2210.50	DZ2	Barrette Pile BC48	0	28-Jan-13 A	22-Feb-13 A																		
0522-2210.81	DZ2	Barrette Pile BC51	0	20-Feb-13 A	16-Mar-13 A																		
0522-2210.51	DZ2	Barrette Pile BC42	15	20-Mar-13	09-Apr-13																		
0522-2210.82	DZ2	Barrette Pile BC52	15	26-Mar-13	15-Apr-13																		
0522-2210.84	DZ2	Barrette Pile BC41	15	10-Apr-13	26-Apr-13																		
0522-2210.83	DZ2	Barrette Pile BC50	15	16-Apr-13	03-May-13																		
0522-2210.85	DZ2	Barrette Pile BC47	15	19-Apr-13	07-May-13																		
0522-2210.87	DZ2	Barrette Pile BC40	15	27-Apr-13	15-May-13																		
0522-2210.86	DZ2	Barrette Pile BC44	15	04-May-13	21-May-13																		
0522-2210.89	DZ2	Barrette Pile BC46	15	08-May-13	24-May-13																		
0522-2210.90	DZ2	Barrette Pile BC49	15	11-May-13	28-May-13																		
0522-2210.88	DZ2	Barrette Pile BC43	15	22-May-13	07-Jun-13																		
0522-2390.15	DZ6	Bulkhead BW2	13	08-Mar-13 A	06-Apr-13																		
0522-2390.20	DZ6	Bulkhead BW5	5	14-Feb-13 A	25-Mar-13																		
0522-2390.30	DZ6	Bulkhead BW4	15	08-Apr-13	24-Apr-13																		
0522-2390.10	DZ6	Bulkhead BW3	10	29-Apr-13	10-May-13																		
05.2.3 - ELS																							
0524-2881.1		Tunnel ELS - Phase 1 Zone 1 - Excav	9	28-Feb-13 A	30-Mar-13																		
0524-2881.2		Tunnel ELS - Phase 1 Zone 1 - LS + Preload	18	18-Mar-13 A	12-Apr-13																		
0524-2882.1		Tunnel ELS - Phase 1 Zone 2 - Excav	9	02-Apr-13	12-Apr-13																		
0524-2882.2		Tunnel ELS - Phase 1 Zone 2 - LS + Preload	12	10-Apr-13	23-Apr-13																		
0524-2883.1		Tunnel ELS - Phase 1 Zone 3 - Excav	15	13-Apr-13	30-Apr-13																		
0524-2883.2		Tunnel ELS - Phase 1 Zone 3 - LS + Preload	18	20-Apr-13	11-May-13																		
0524-2884.1		Tunnel ELS - Phase 1 Zone 4 - Excav	9	02-May-13	11-May-13																		

- Remaining Level of Effort
- Actual Level of Effort
- Actual Work
- Remaining Work
- Critical Remaining Work
- Milestone

Contract HY/2009/19

Three Month Rolling Programme (20 FEB 2013 to 19 MAY 2013)

3MRP

3MRP - Mar 2013 to Jun 2013

Activity ID	HY19 Print Sequenc	Activity Name	Rem Dur	Start	Finish	2013																	
						March				April				May				June					
						18	25	04	11	18	25	01	08	15	22	29	06	13	20	27	03	10	17
0524-2884.2		Tunnel ELS - Phase 1 Zone 4 - LS + Preload	12	09-May-13	22-May-13																		
0524-2885.1		Tunnel ELS - Phase 1 Zone 5 - Excav	15	13-May-13	29-May-13																		
0524-2885.2		Tunnel ELS - Phase 1 Zone 5 - LS + Preload	15	20-May-13	05-Jun-13																		
0524-2886		Tunnel ELS - Phase 1 Zone 6 - Excav + Blinding	12	30-May-13	13-Jun-13																		
0524-2887		Tunnel ELS - Phase 1 Zone 7 - Excav + Blinding	12	06-Jun-13	20-Jun-13																		
05.3 - Box Culvert T1																							
0530-3072	2	Bay 2 - Base Slab	0	20-Feb-13 A	05-Mar-13 A																		
0530-3073	2	Bay 2 - Wall & Roof	4	06-Mar-13 A	23-Mar-13																		
0530-3074	2	Bay 2 - Backfilling + Reinstatement	12	25-Mar-13	10-Apr-13																		
0530-3076	2	Bay 1 - TTM Implementation + Clearance	12	11-Apr-13	24-Apr-13																		
0530-3112	3	Bay 9-11 - Excavation	0	12-Dec-12 A	14-Mar-13 A																		
0530-3114	3	Bay 9-11 - Precast Unit Erection	6	15-Mar-13 A	26-Mar-13																		
0530-3368	3	Bay 9 - Cast In-Situ	18	27-Mar-13	19-Apr-13																		
0530-3378	3	Bay 9 - Backfilling	12	20-Apr-13	04-May-13																		
0530-3085	4	Bay 6-8 - Temporary Pre-bored H-pile	0	15-Feb-13 A	14-Mar-13 A																		
0530-3087	4	Bay 6-8 - Excavation	24	19-Mar-13 A	19-Apr-13																		
0530-3090	4	Bay 6-8 - Base Slab	36	16-Apr-13	28-May-13																		
0530-3095	4	Bay 6-8 - Roof Slab	36	08-May-13	19-Jun-13																		
06 - SECTION 3 OF THE WORKS																							
06.1 - Westbound - Pier 29-34																							
0610-2110		Pier 29 Pre-drilling at Portion VB (4 nos)	24	02-Apr-13*	30-Apr-13																		
0610-2115		Pier 29 Approve Founding Level	18	02-May-13	22-May-13																		
0610-2120		Pier 29 Bored Piles (4 nos)	48	23-May-13	19-Jul-13																		
06.2 - Box Culvert U1																							
0620-2460	U1	U1 Construct Bay 10 - Base Slab	0	28-Feb-13 A	19-Mar-13 A																		
0620-2440	U1	U1 Backfill Bay 6 to 8 + Extract Sheetpiles	18	20-Mar-13	12-Apr-13																		
0620-2465	U1	U1 Construct Bay 10 - Wall + Roof	6	20-Mar-13	26-Mar-13																		
0620-2467	U1	U1 Construct Bay 5 - ELS	15	30-Jan-13 A	09-Apr-13																		
0620-2540	U1	1500mm Drainage - Sheet Piling	9	11-Mar-13 A	30-Mar-13																		
0620-2550	U1	1500mm Drainage - Excavation	15	02-Apr-13	19-Apr-13																		
0620-2468	U1	U1 Construct Bay 5 - Base Slab	7	10-Apr-13	17-Apr-13																		
0620-2560	U1	1500mm Drainage - Pile Laying + Manhole	15	13-Apr-13	30-Apr-13																		
0620-2469	U1	U1 Construct Bay 5 - Wall + Roof	9	18-Apr-13	27-Apr-13																		
0620-2445	U1	U1 Backfill Bay 5 + 1500mm Drainage + Extract Sheetpiles	12	02-May-13	15-May-13																		
0620-2480	U1b	U1 Bay 10 + 11 + 12 Sheetpiles + ELS	0	07-Nov-12 A	27-Feb-13 A																		
0620-2520	U1b	U1 Construct Bay 13 - Excavation	0	14-Feb-13 A	05-Mar-13 A																		
0620-2500	U1b	U1 Construct Bay 11 - Base Slab	6	20-Mar-13	26-Mar-13																		
0620-2530	U1b	U1 Construct Bay 13 - Install Precast Unit	2	06-Mar-13 A	21-Mar-13																		
0620-2505	U1b	U1 Construct Bay 11 - Wall + Roof	6	27-Mar-13	04-Apr-13																		
0620-2535	U1b	U1 Construct Bay 12 - Cast In-situ	15	30-Mar-13	18-Apr-13																		
0620-2510	U1b	U1 Backfill Bays 11 + 12 + 13	9	02-Apr-13	12-Apr-13																		
0620-2380	U1b	Divert and Abandon old U1 open channel at VB & III	2	29-Apr-13	30-Apr-13																		
06.3 - Admin Building																							
0630-3100		Predrill for Adm Building (55 no) (4 set)	54	02-Apr-13*	05-Jun-13																		

- █ Remaining Level of Effort
- █ Actual Level of Effort
- █ Actual Work
- █ Remaining Work
- █ Critical Remaining Work
- ◆ Milestone

Contract HY/2009/19

Three Month Rolling Programme (20 FEB 2013 to 19 MAY 2013)

3MRP

3MRP - Mar 2013 to Jun 2013

Activity ID	HY19 Print Sequence	Activity Name	Rem Dur	Start	Finish	2013																							
						March						April						May						June					
						18	25	04	11	18	25	01	08	15	22	29	06	13	20	27	03	10	17						
0630-3105		Admin Bldg Pile G.I. Report / Founding Level	18	06-Jun-13	27-Jun-13																								
10 - SECTION X OF THE WORKS																													
10.1 - E/B Bridges (Bridge D, E and F)																													
10.1.1 - Marine Pier Construction																													
Pier F03 to F15																													
1011-2150	F03	F3 Pile Cap Shutter Cofferdam	12	23-Jan-13 A	04-Apr-13																								
1011-2155	F03	F3 Pile Cap Construction	21	06-Apr-13	30-Apr-13																								
1011-2160	F03	F3 Pier/Column Construction	12	02-May-13	15-May-13																								
1011-2170	F03	F3 Crosshead Construction	12	16-May-13	29-May-13																								
1011-2975	F03	F3 Extract Temp Pile	6	30-May-13	05-Jun-13																								
1011-2180	F04	F4 Pile Cap Shutter Cofferdam	18	06-Apr-13	26-Apr-13																								
1011-2185	F04	F4 Pile Cap Construction	18	27-Apr-13	18-May-13																								
1011-2190	F04	F4 Pier/Column Construction	12	20-May-13	01-Jun-13																								
1011-2200	F04	F4 Crosshead Construction	18	03-Jun-13	24-Jun-13																								
1011-2210	F05	F5 Pile Cap Shutter Cofferdam	0	25-Feb-13 A	11-Mar-13 A																								
1011-2215	F05	F5 Pile Cap Construction	9	12-Mar-13 A	30-Mar-13																								
1011-2220	F05	F5 Pier/Column Construction	12	02-Apr-13	16-Apr-13																								
1011-2230	F05	F5 Crosshead Construction	18	17-Apr-13	08-May-13																								
1011-2237	F05	Bearing intallation pier F5	6	09-May-13	15-May-13																								
1011-2020	F06	F6 Dismantle Piling Platform	12	20-Feb-13 A	04-Apr-13																								
1011-2240	F06	F6 Pile Cap Shutter Cofferdam	18	06-Apr-13	26-Apr-13																								
1011-2245	F06	F6 Pile Cap Construction	12	27-Apr-13	11-May-13																								
1011-2250	F06	F6 Pier/Column Construction	12	13-May-13	25-May-13																								
1011-2260	F06	F6 Crosshead Construction	24	27-May-13	24-Jun-13																								
1011-2030	F07	F7 Dismantle Piling Platform	12	06-Apr-13	19-Apr-13																								
1011-2270	F07	F7 Pile Cap Shutter Cofferdam	18	20-Apr-13	11-May-13																								
1011-2275	F07	F7 Pile Cap Construction	12	13-May-13	25-May-13																								
1011-2280	F07	F7 Pier/Column Construction	12	27-May-13	08-Jun-13																								
1011-2300	F08	F8 Pile Cap Shutter Cofferdam	18	02-May-13	22-May-13																								
1011-2305	F08	F8 Pile Cap Construction	12	23-May-13	05-Jun-13																								
1011-2310	F08	F8 Pier/Column Construction	12	06-Jun-13	20-Jun-13																								
1011-2050	F09	Dismantle Piling Platform at Pier F9	12	20-Apr-13	04-May-13																								
1011-2060	F10	Dismantle Piling Platform at Pier F10	12	06-May-13	18-May-13																								
1011-1770.5	F11	Pier F11 Dolphin Socketed H-Pile P4	0	26-Jan-13 A	20-Feb-13 A																								
1011-1770.6	F11	Pier F11 Dolphin Socketed H-Pile P6	0	26-Jan-13 A	21-Feb-13 A																								
1011-2070	F11	Dismantle Piling Platform at Pier F11	12	20-May-13	01-Jun-13																								
1011-2350	F11	F11 Pile Cap Construction	18	10-Jun-13	02-Jul-13																								
1011-1822.3	F12	Pier F12 Dolphin Socketed H-Pile P3	0	04-Jan-13 A	04-Mar-13 A																								
1011-1822.5	F12	Pier F12 Dolphin Socketed H-Pile P4	0	01-Feb-13 A	01-Mar-13 A																								
1011-1822.6	F12	Pier F12 Dolphin Socketed H-Pile P6	0	01-Feb-13 A	27-Feb-13 A																								
1011-2075	F12	Dismantle Piling Platform at Pier F12	12	03-Jun-13	17-Jun-13																								
1011-3055	ZB	Existing IEC Bridge - Road Marking	0	28-Jan-13 A	03-Mar-13 A																								
1011-3005	ZB	Design of Temporary Parapet for IEC at Pier F8 to F14	24	15-Jan-13 A	19-Apr-13																								
1011-3035	ZB	Submit MS for Construction of Temp Parapet at IEC Bridge	9	11-Feb-13 A	30-Mar-13																								

- Remaining Level of Effort
- Actual Level of Effort
- Actual Work
- Remaining Work
- Critical Remaining Work
- Milestone

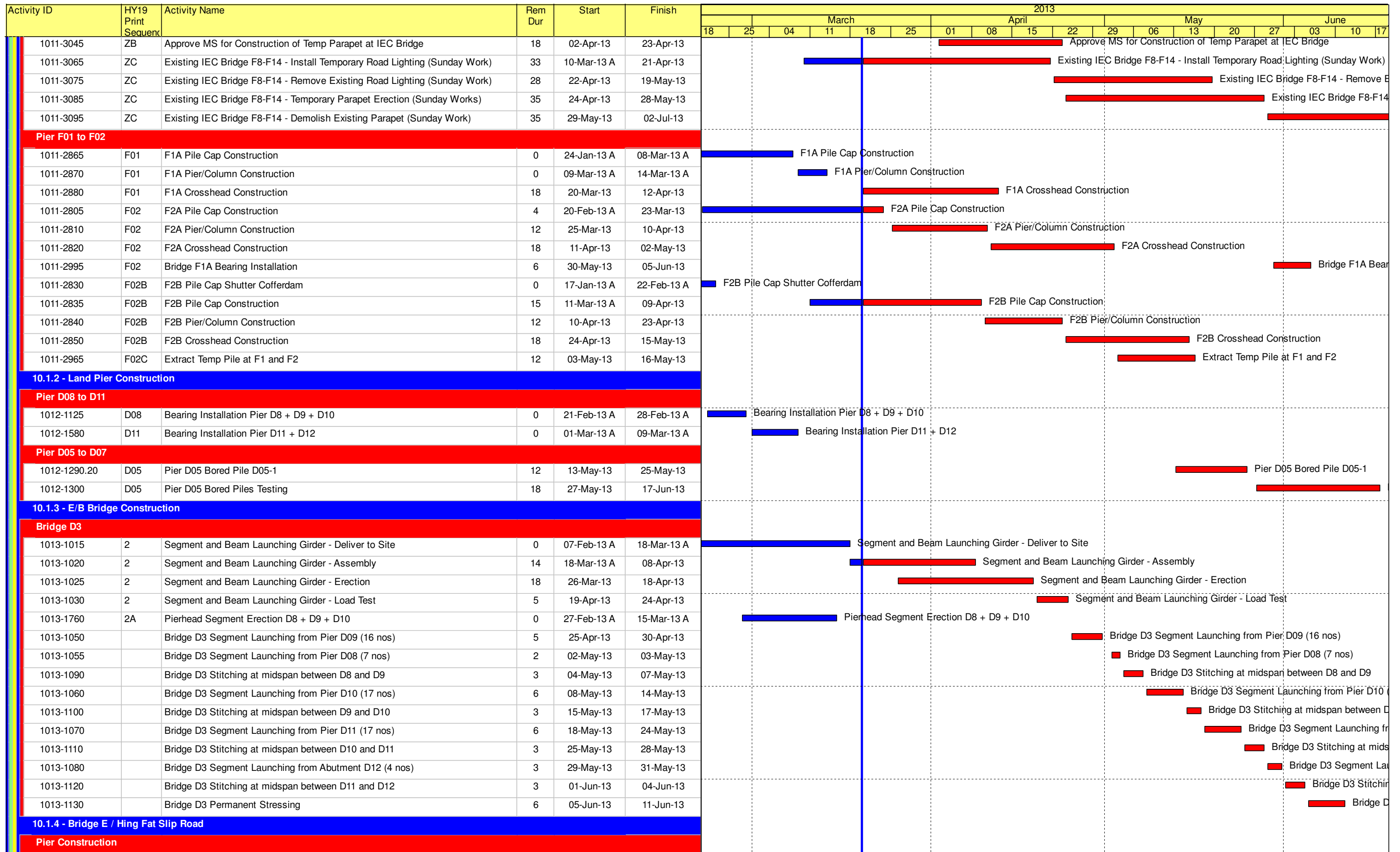
Contract HY/2009/19

Three Month Rolling Programme (20 FEB 2013 to 19 MAY 2013)

3MRP

3MRP - Mar 2013 to Jun 2013

Page 5 of 7



- █ Remaining Level of Effort
- █ Actual Level of Effort
- █ Actual Work
- █ Remaining Work
- █ Critical Remaining Work
- ◆ Milestone

Contract HY/2009/19

Three Month Rolling Programme (20 FEB 2013 to 19 MAY 2013)

3MRP

3MRP - Mar 2013 to Jun 2013

Activity ID	HY19 Print Sequenc	Activity Name	Rem Dur	Start	Finish	2013															
						March				April				May				June			
						18	25	04	11	18	25	01	08	15	22	29	06	13	20	27	03
1014-1010		Pier E1b-4 Bored Pile	0	12-Jan-13 A	20-Feb-13 A	Pier E1b-4 Bored Pile															
1014-1220		Pier E1b-1 Bored Pile	18	29-May-13*	19-Jun-13	Pier E1b-1 Bored Pile															
10.3 - Middle Bridge (Bridge F)																					
10.3.1 - Pier Construction																					
Abutment D12																					
1031-1053		Bored pile D12-12 (low headroom)	0	14-Jan-13 A	21-Feb-13 A	Bored pile D12-12 (low headroom)															
1031-1055		Bored pile D12-05 (low headroom)	12	04-Mar-13 A	04-Apr-13	Bored pile D12-05 (low headroom)															
1031-1370		Bored pile D12-13 (low headroom)	8	01-Mar-13 A	28-Mar-13	Bored pile D12-13 (low headroom)															
1031-1380		Bored pile D12-06 (low headroom)	30	06-Apr-13	11-May-13	Bored pile D12-06 (low headroom)															
1031-1390		Bored pile D12-14 (low headroom)	30	06-Apr-13	11-May-13	Bored pile D12-14 (low headroom)															
1031-1400		Bored pile D12-07 (low headroom)	30	13-May-13	17-Jun-13	Bored pile D12-07 (low headroom)															
10.6 - Tunnel Approach Ramp																					
10.6.1 - Approach Ramp (Excluding Portion IIB)																					
Bored Piles																					
1061-1520		Bored Pile Ramp - BN03	3	22-Feb-13 A	22-Mar-13	Bored Pile Ramp - BN03															
1061-1530		Bored Pile Ramp - BN010	14	14-Mar-13 A	08-Apr-13	Bored Pile Ramp - BN010															
1061-1540		Bored Pile Ramp - BN04	18	27-Mar-13	19-Apr-13	Bored Pile Ramp - BN04															
1061-1550		Bored Pile Ramp - BN011	18	12-Apr-13	03-May-13	Bored Pile Ramp - BN011															
1061-1560		Bored Pile Ramp - BN05	18	24-Apr-13	15-May-13	Bored Pile Ramp - BN05															
1061-1570		Bored Pile Ramp - BN012	18	08-May-13	28-May-13	Bored Pile Ramp - BN012															
1061-1580		Bored Pile Ramp - BN06	18	20-May-13	08-Jun-13	Bored Pile Ramp - BN06															
1061-1590		Bored Pile Ramp - BN013	18	01-Jun-13	22-Jun-13	Bored Pile Ramp - BN013															

- █ Remaining Level of Effort
- █ Actual Level of Effort
- █ Actual Work
- █ Remaining Work
- █ Critical Remaining Work
- ◆ Milestone

Contract HY/2009/19

Three Month Rolling Programme (20 FEB 2013 to 19 MAY 2013)

3MRP

3MRP - Mar 2013 to Jun 2013

Page 7 of 7